

Holyhead Close, Hailsham, East Sussex, BN27

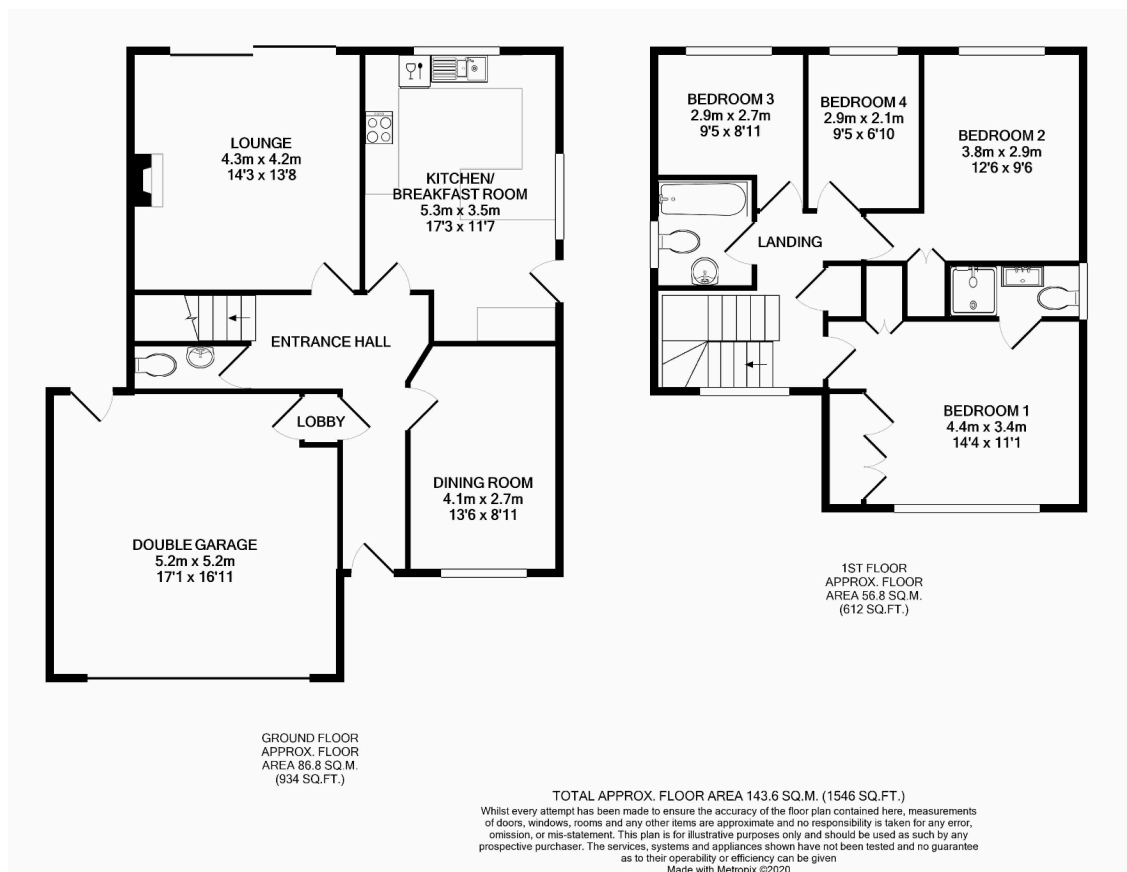
Guide Price £500,000-£515,000

 4  2  2





- Guide Price £500,000-£515,000
- Four Bedrooms
- Sought After Location
- Downstairs Cloakroom
- Two Reception Rooms
- Detached Home
- Double Garage & Ample Off Road Parking
- Quiet Cul-De-Sac With Adjoining Park Land
- Refitted Kitchen/Breakfast Room
- En-Suite Shower Room



Guide Price £500,000 to £515,000

Situated in a quiet cul-de-sac adjoining park land is this modern and very well presented four-bedroom, two reception room detached house with double garage.

